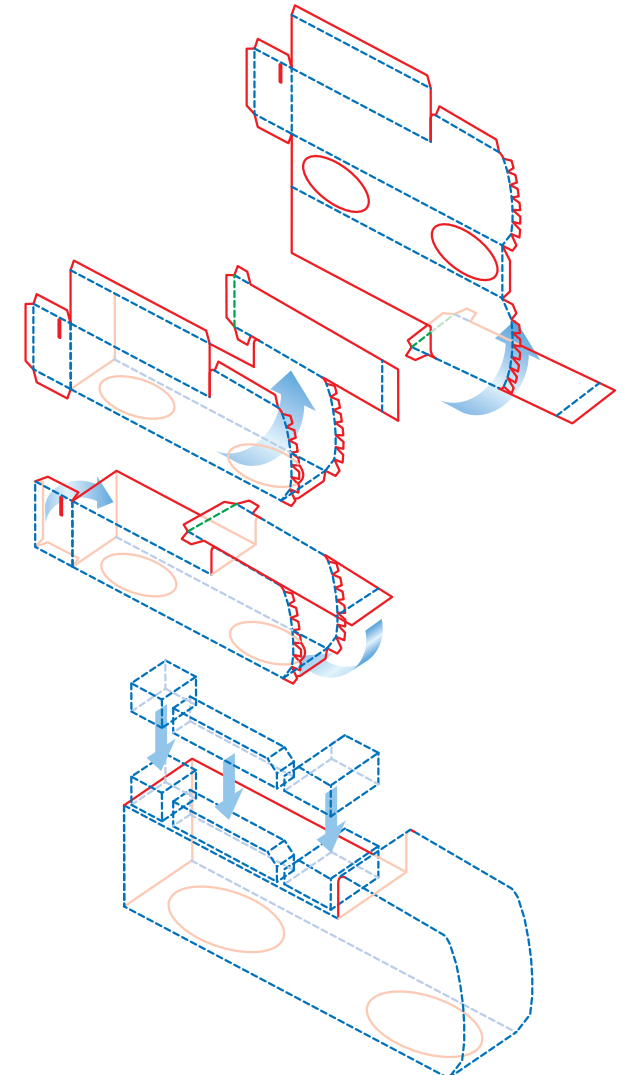


What to prepare

- Print-out paper
(Special paper that is about as thick as a postcard is best)
- Kite string (for wire)
- Utility knife or design knife
- Thick needle that allows an awl or kite string to pass through
- Ruler
- Ballpoint pen that can no longer write, or stylus
- Adhesive (such as glue)
- Try being creative with tools that are easy to use on your own, such as tweezers, a bamboo spatula, etc.

Assembly procedure

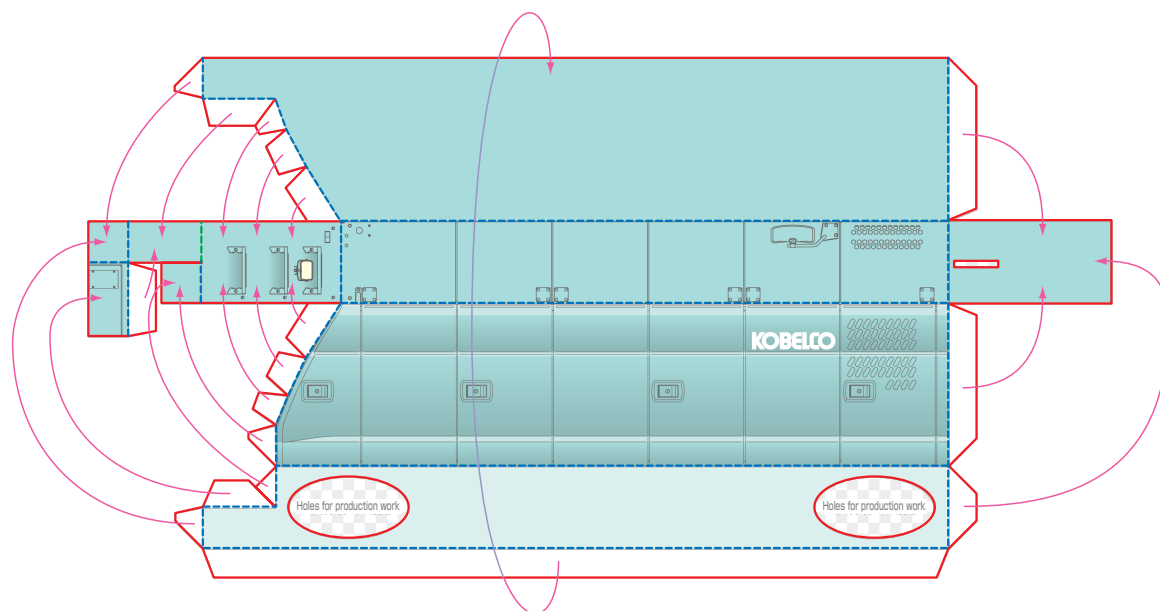
- ① When the print-out is ready, press hard with a ballpoint pen that can no longer write, or a stylus, to make creases along the fold lines before cutting them out.
- ② Carefully cut on the center of the cut-out line.
- ③ Do not apply glue right away, but make creases on the mountain folds and valley folds first to check the finished shape. Then, paste it starting from the narrow parts or parts where the folds are thin.



- Cut-out line
- - - Mountain fold
- - - Valley fold



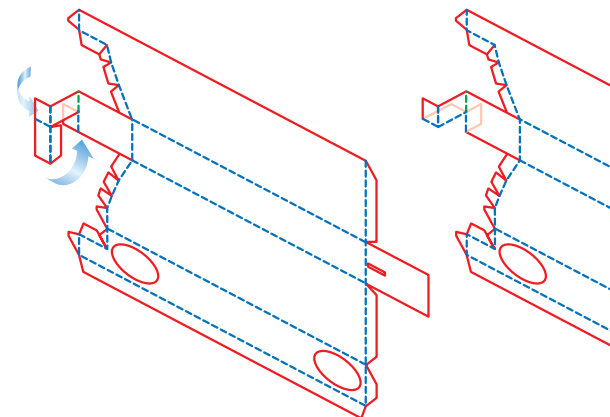
- When using a utility knife or awl, be careful not to cut your hands or legs!
- When using a utility knife or bamboo skewer, be careful not to scratch the table or floor!



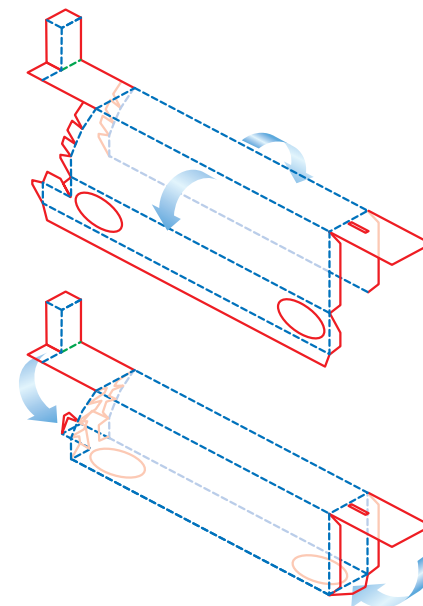
- Cut-out line
- - - Mountain fold
- - - Valley fold

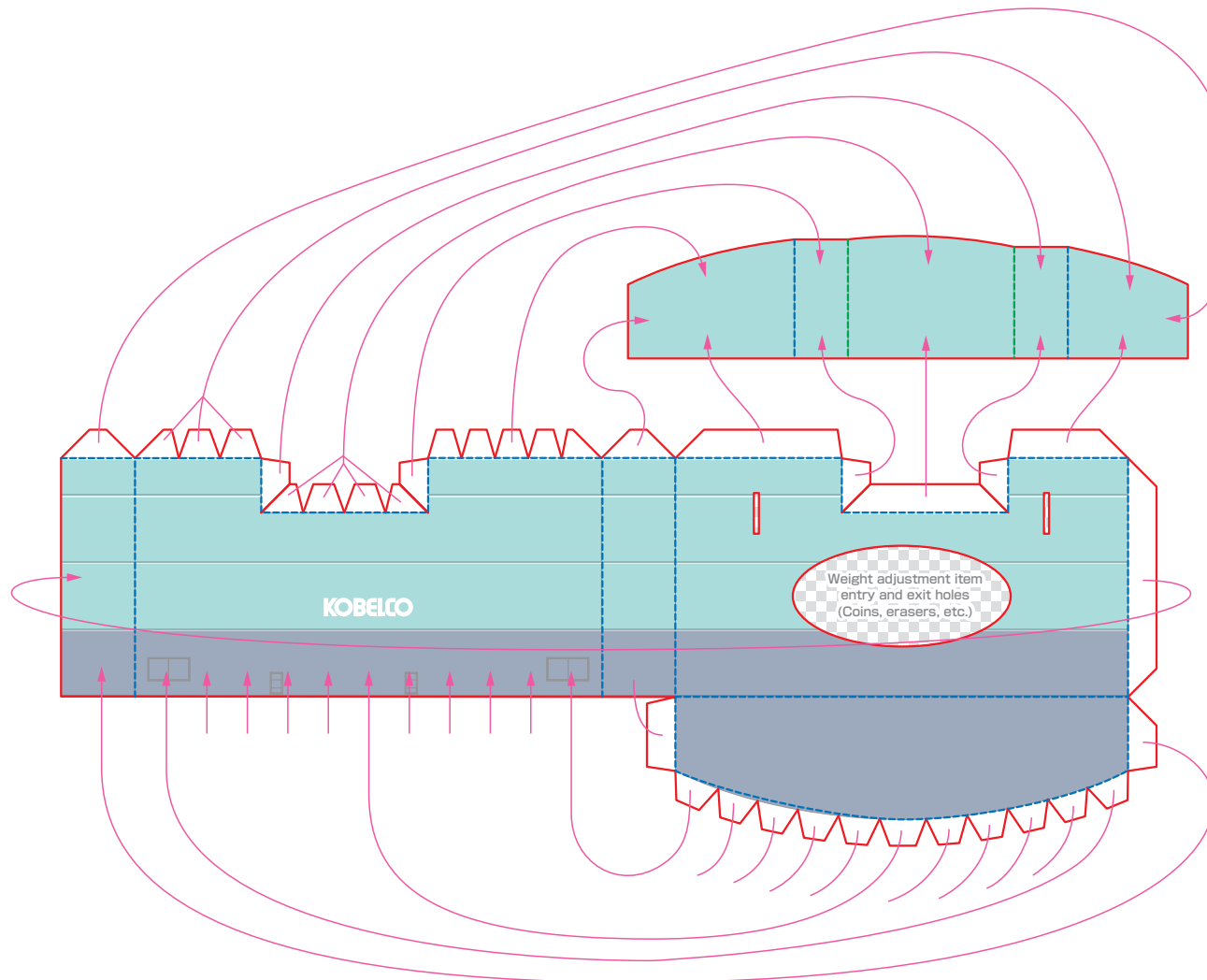
Assembly procedure

- ① Make a fold line before cutting it, in the same way as the others.
- ② Cut exactly along the cut-out lines.
- ③ Make creases on the folds and assemble once before applying glue. At this point, check where it is convenient to paste from first, before actually pasting.

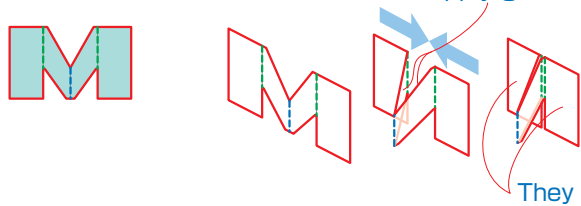


- ④ Pasting is easier if you assemble from the thin sections first.





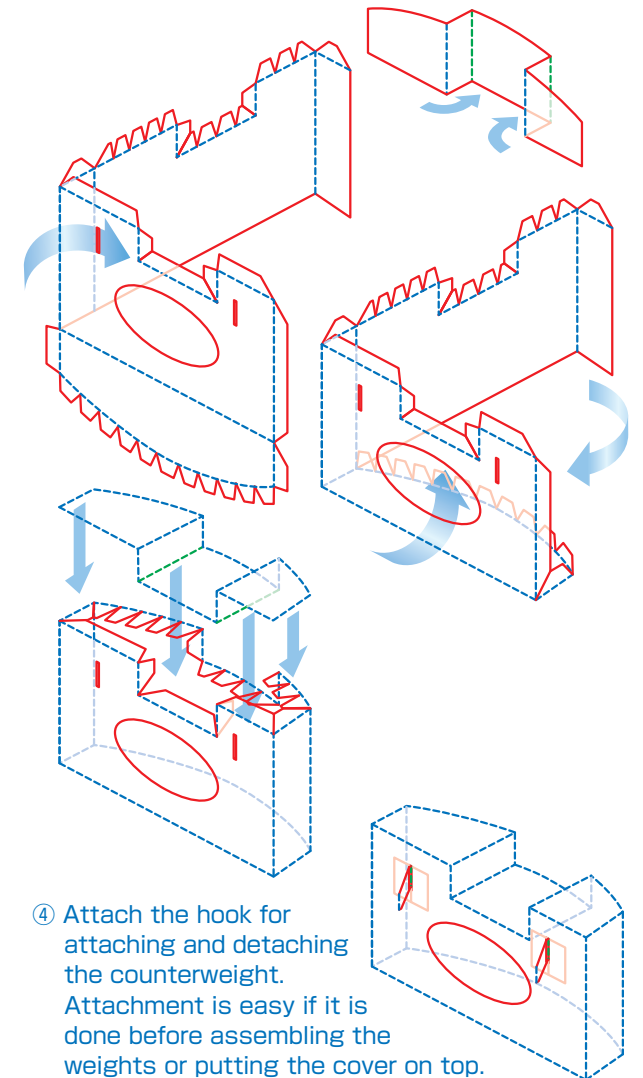
Apply glue on the inner side and fold it in half.



They are pasted on the inner side of the weight, so the gluing tabs will be the front.

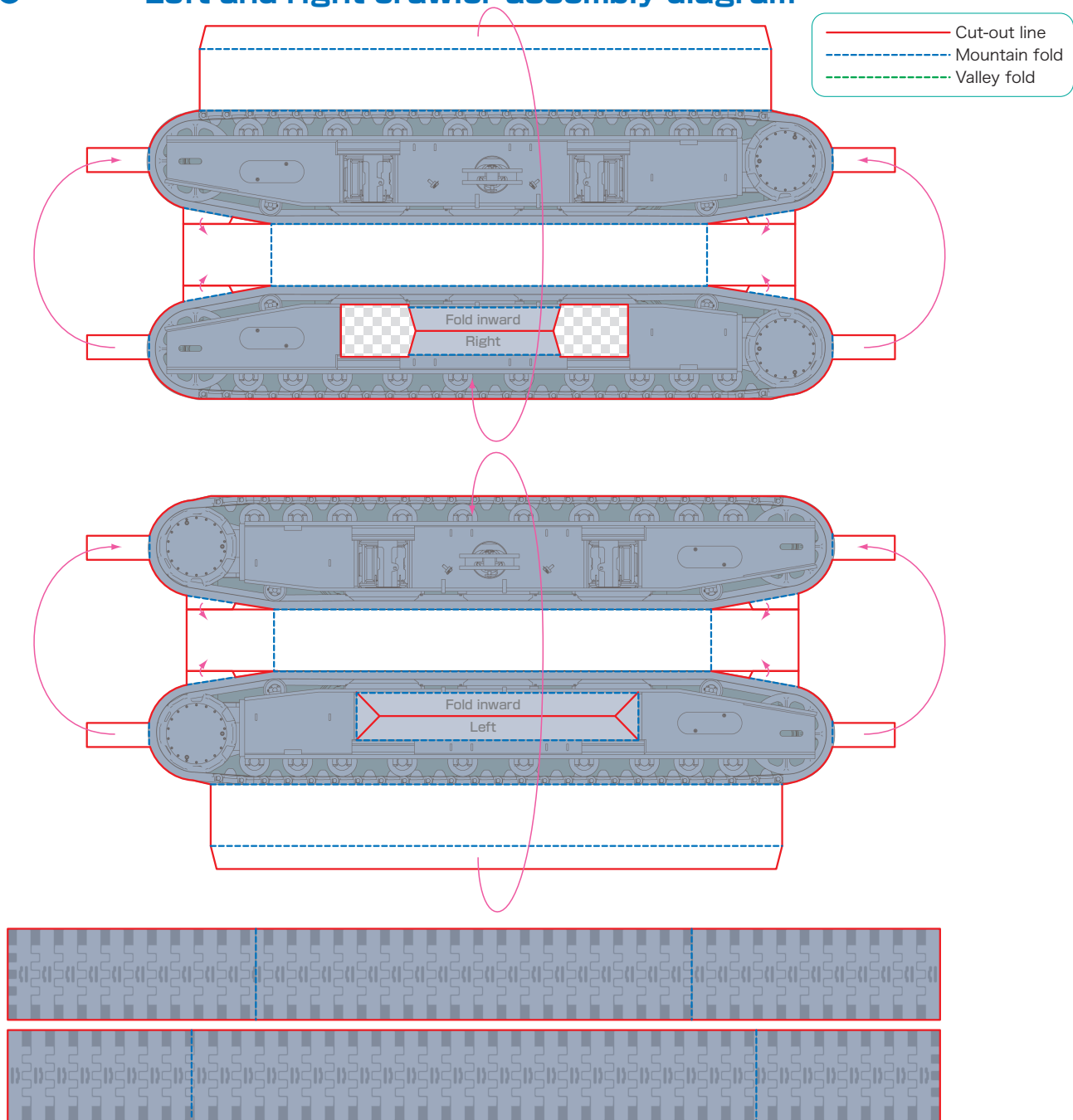
Assembly procedure

- ① If you make a fold line first, cut on the middle of the cut-out line as much as possible.
- ② Do not apply glue right away, but make creases on the mountain folds and valley folds first to check the finished shape.
- ③ Think about where it would be easy for you to start pasting first, before actually pasting.



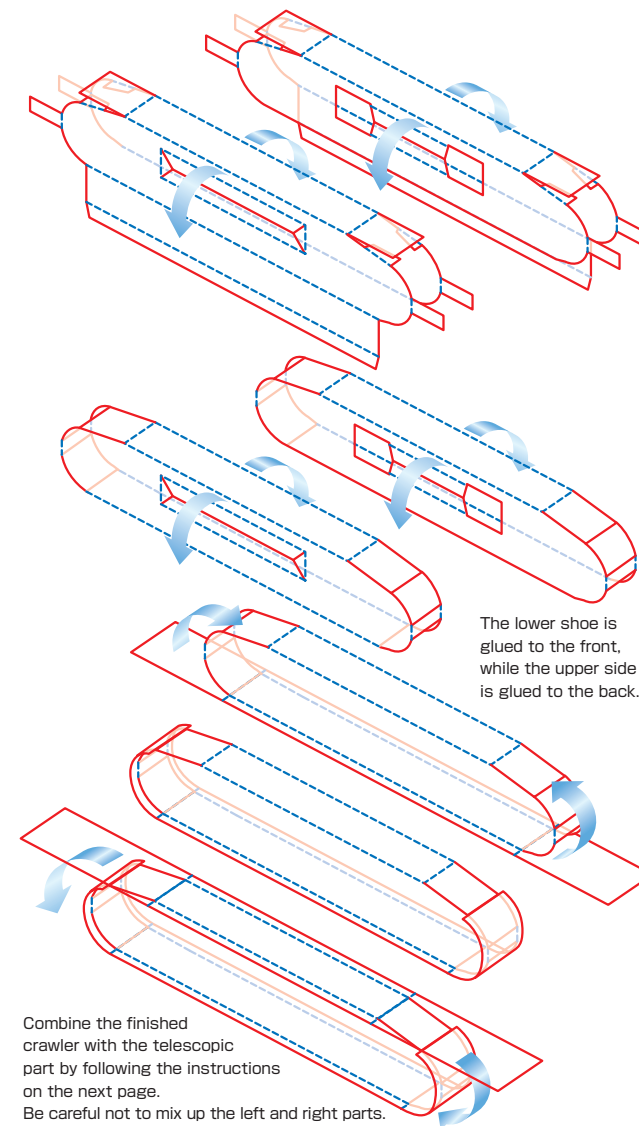
- ④ Attach the hook for attaching and detaching the counterweight. Attachment is easy if it is done before assembling the weights or putting the cover on top.

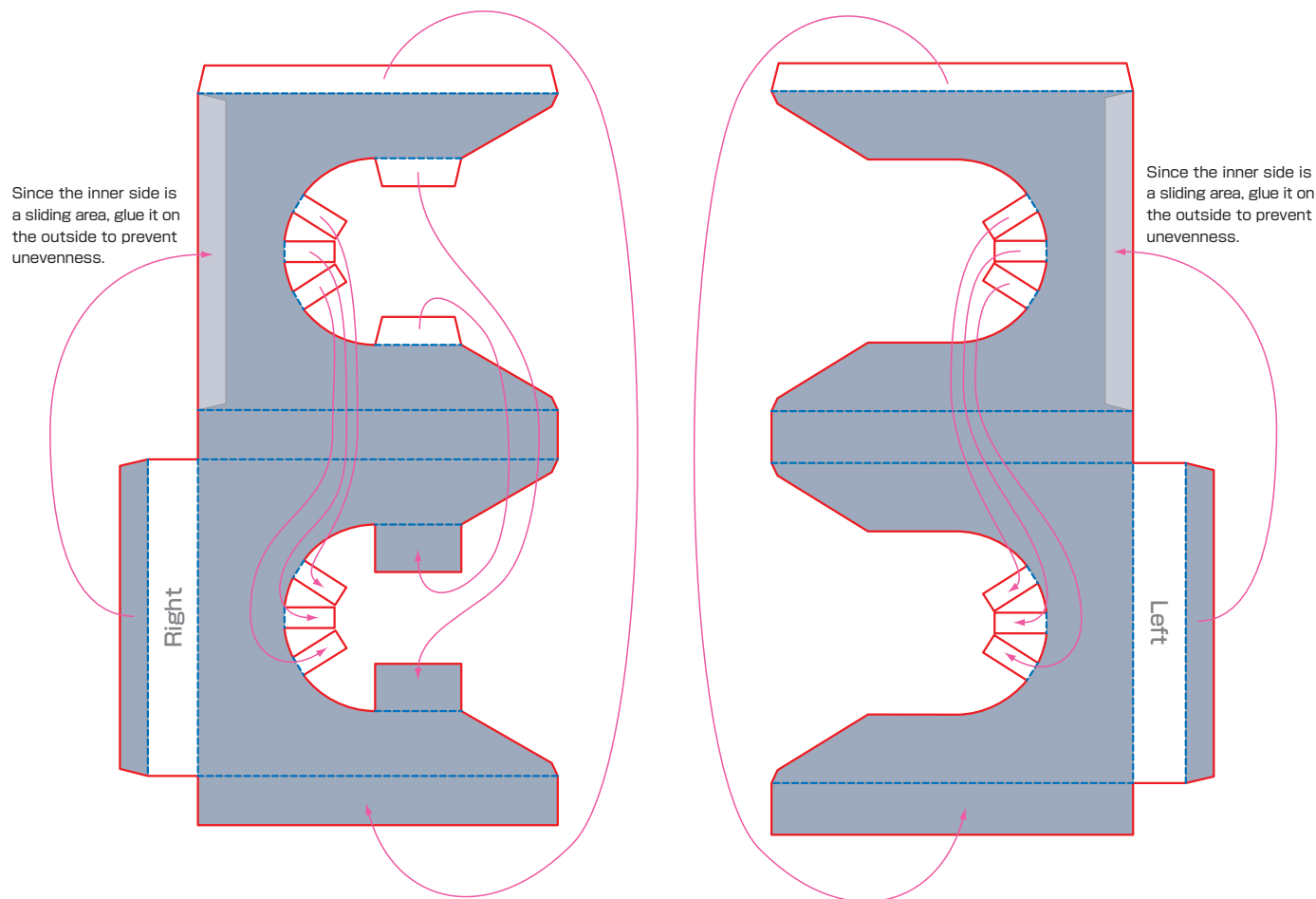
Left and right crawler assembly diagram



Assembly procedure

- ① Make a fold line before cutting it, in the same way as the others.
- ② Cut exactly along the cut-out lines.
- ③ Make creases on the folds and assemble once before applying glue. At this point, check where it is convenient to start pasting first before pasting with your hand.

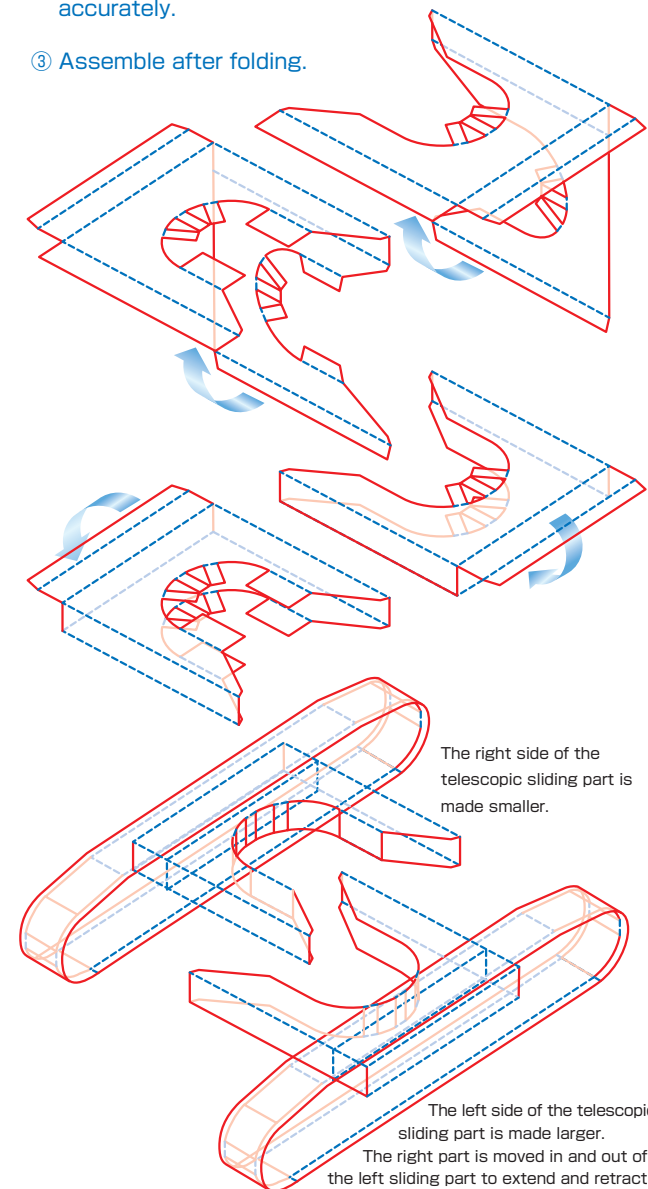


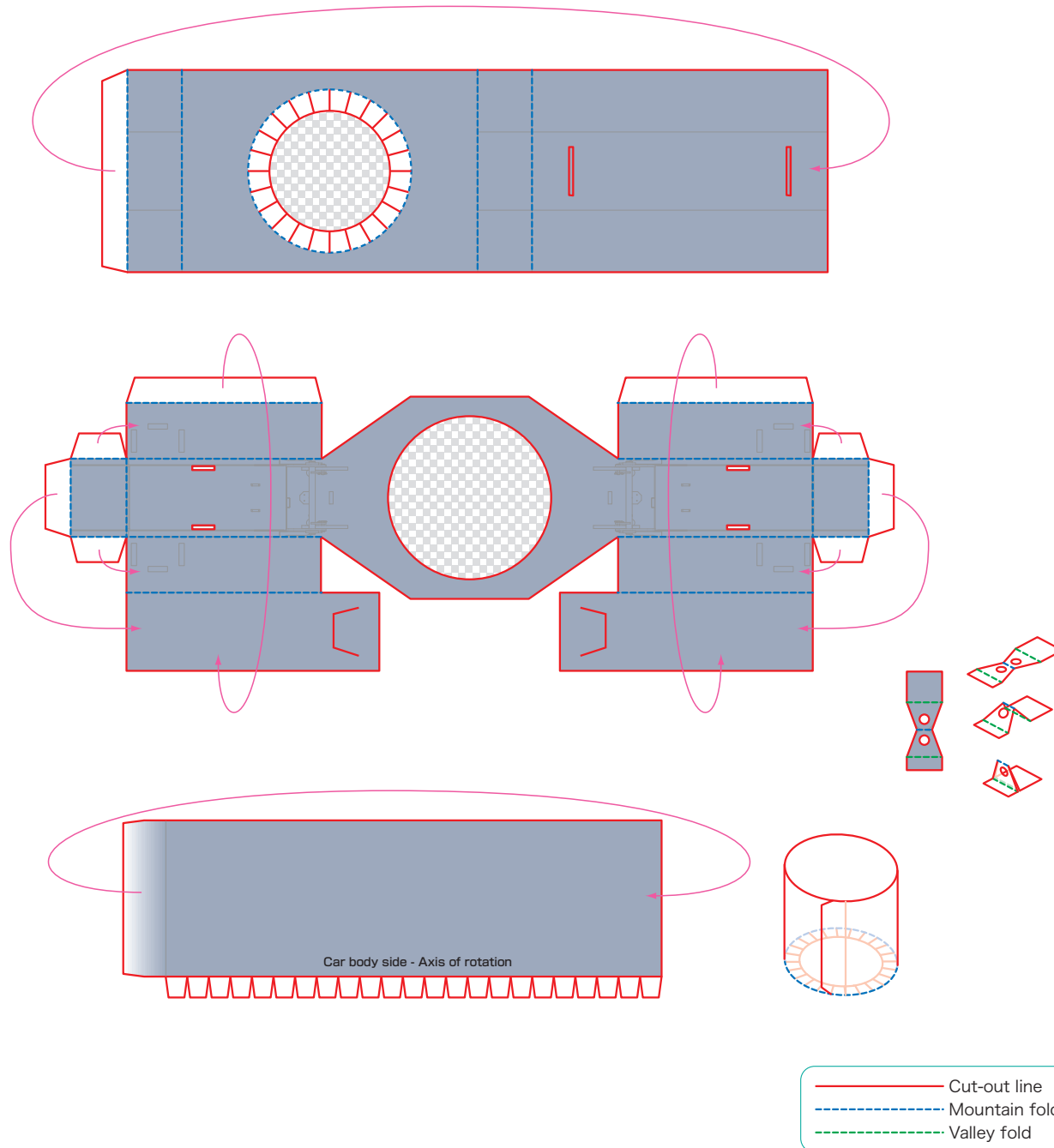


- Cut-out line
- - - Mountain fold
- - - Valley fold

Assembly procedure

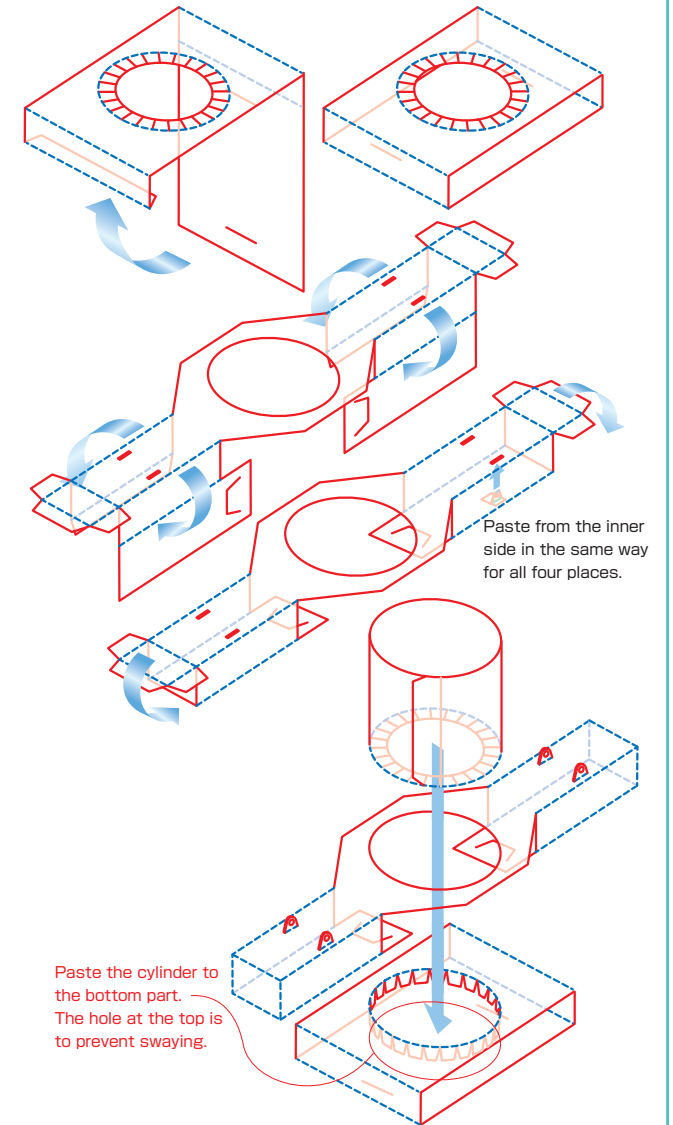
- ① On this page, we will make parts for extending and retracting the left and right crawlers. When these are finished, paste them together with the crawler made on the previous page.
- ② When you make a fold line, the cut-out line can be cut accurately.
- ③ Assemble after folding.



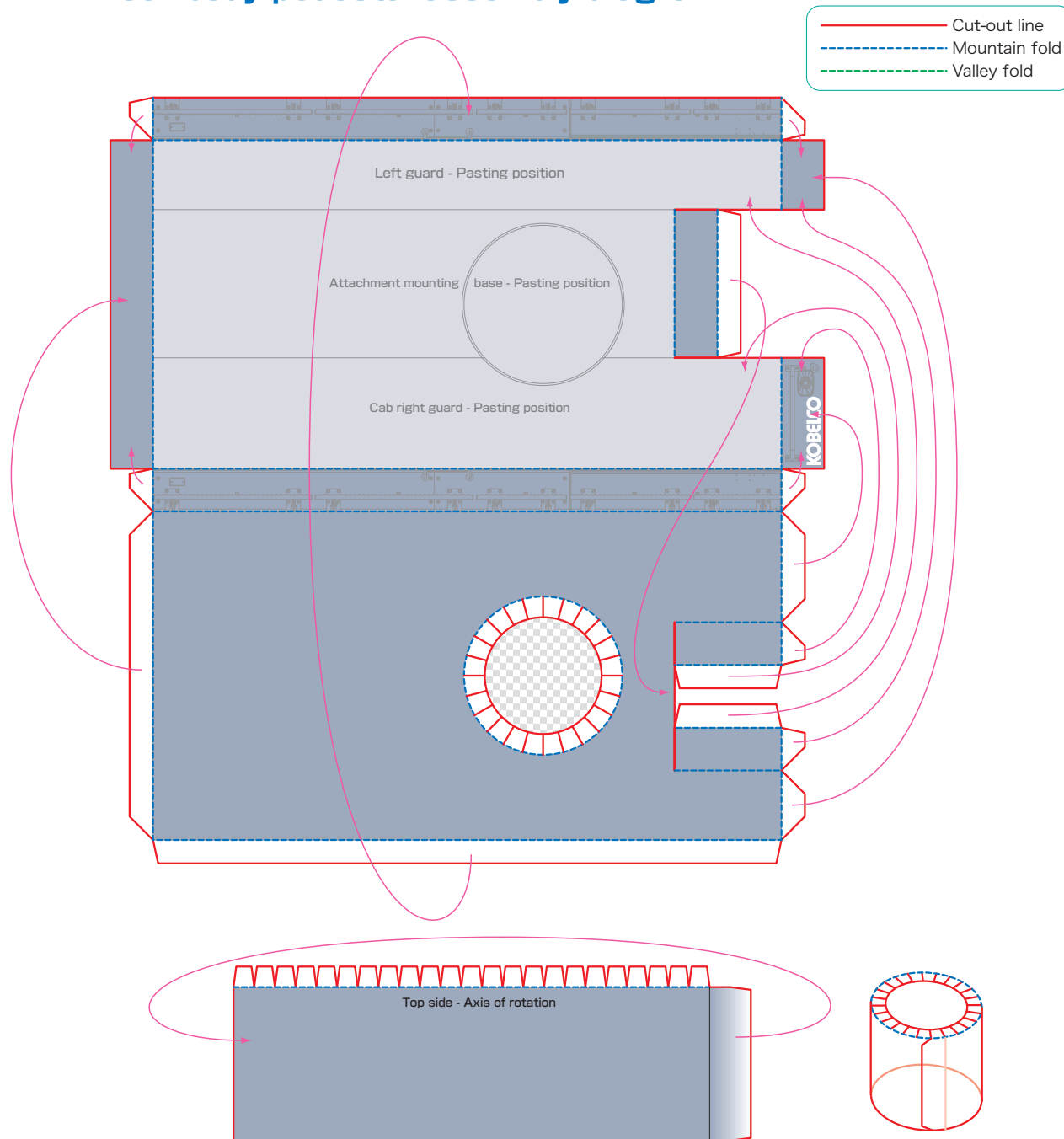


Assembly procedure

- ① Car body combining the parts for extending and retracting the left and right crawlers made on the previous page into one. In addition, we will also make car body weight that can be attached and detached.
- ② When you make a fold line, the cut-out line can be cut accurately.
- ③ Assemble after folding.

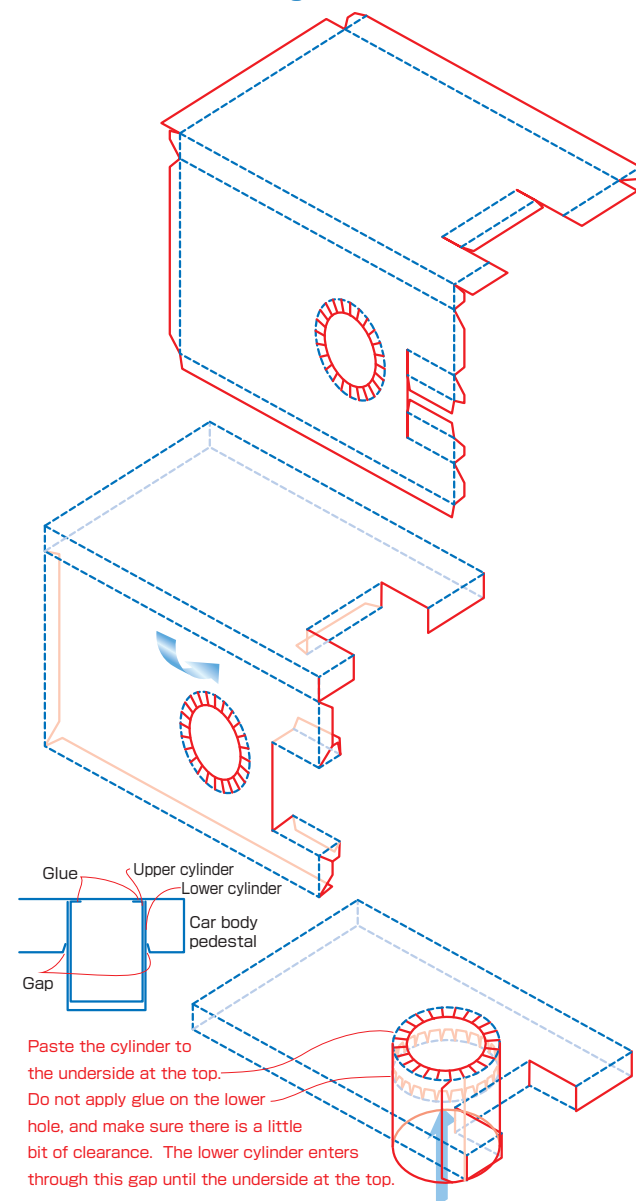


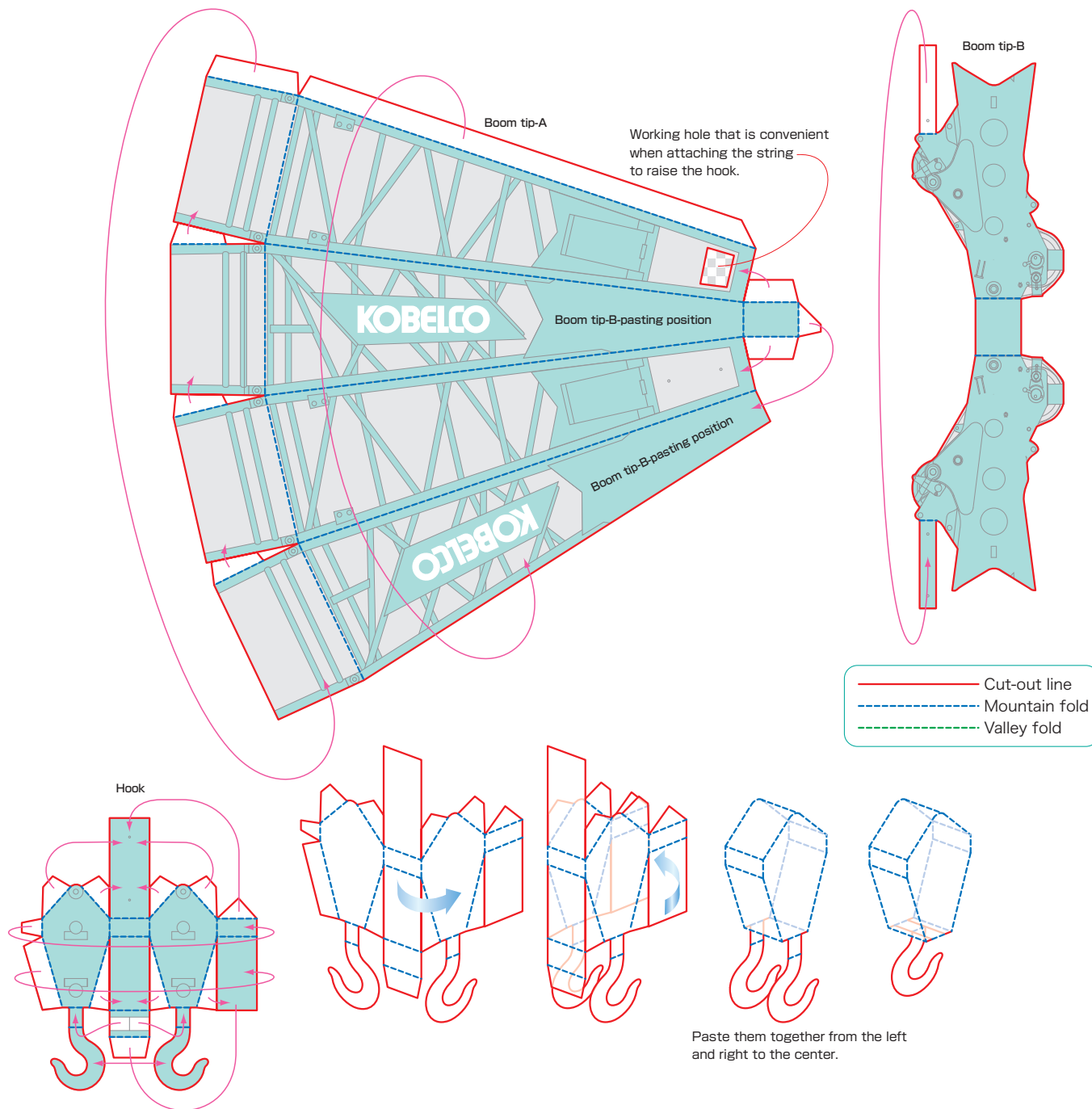
Car body pedestal assembly diagram



Assembly procedure

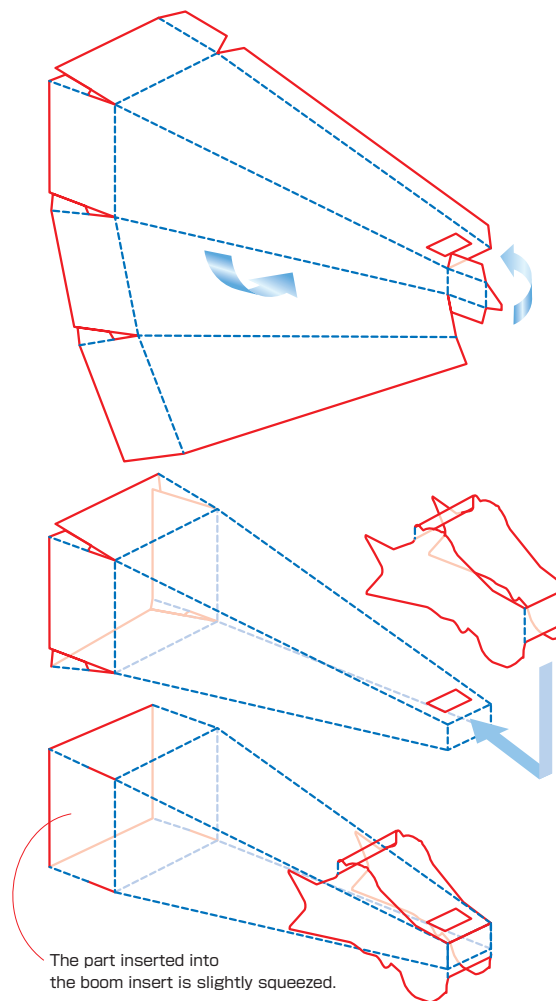
- ① Car body to mount the cab, guards, attachments, etc.
- ② When you make a fold line, the cut-out line can be cut accurately.
- ③ Assemble after folding.

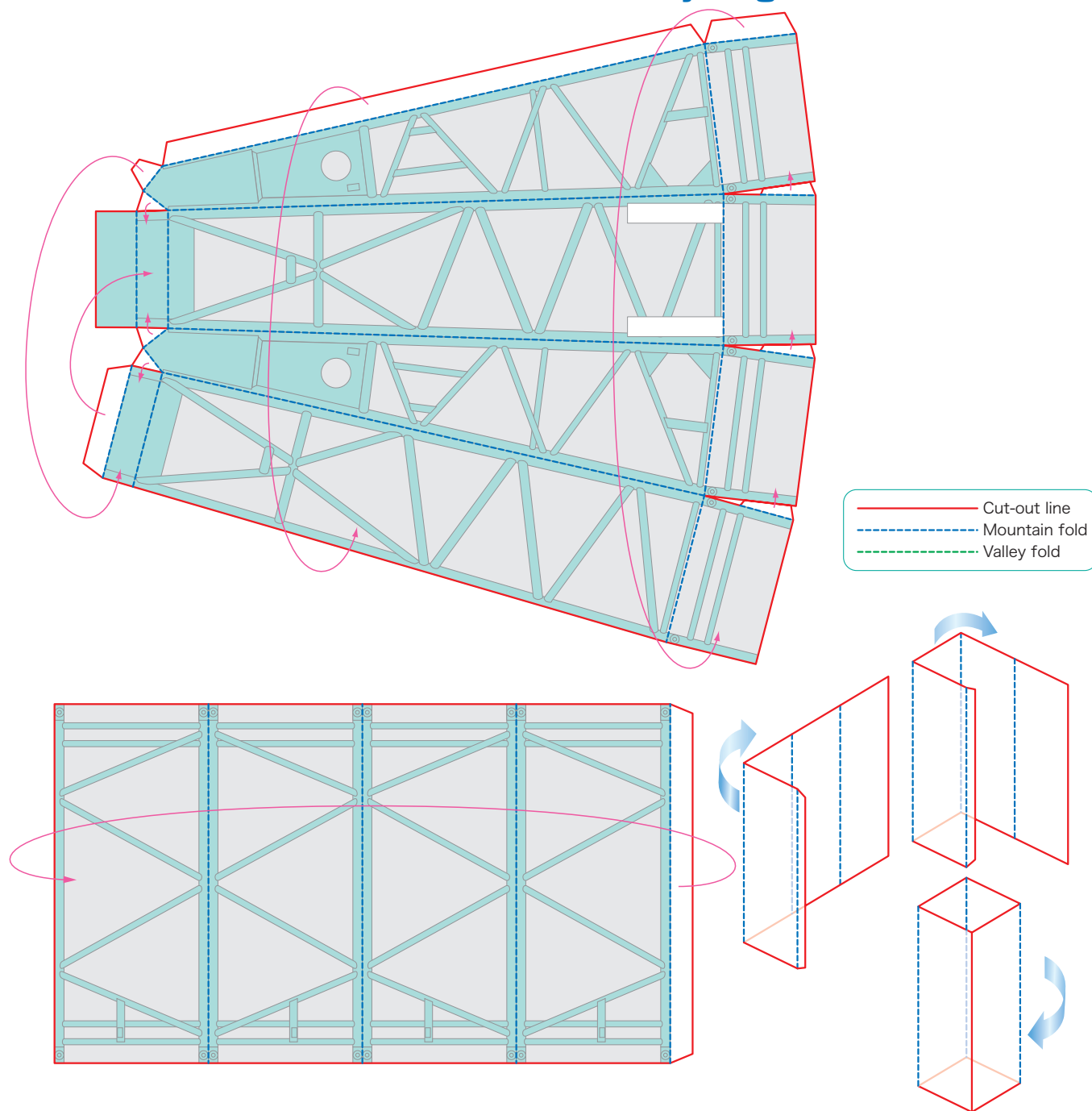




Assembly procedure

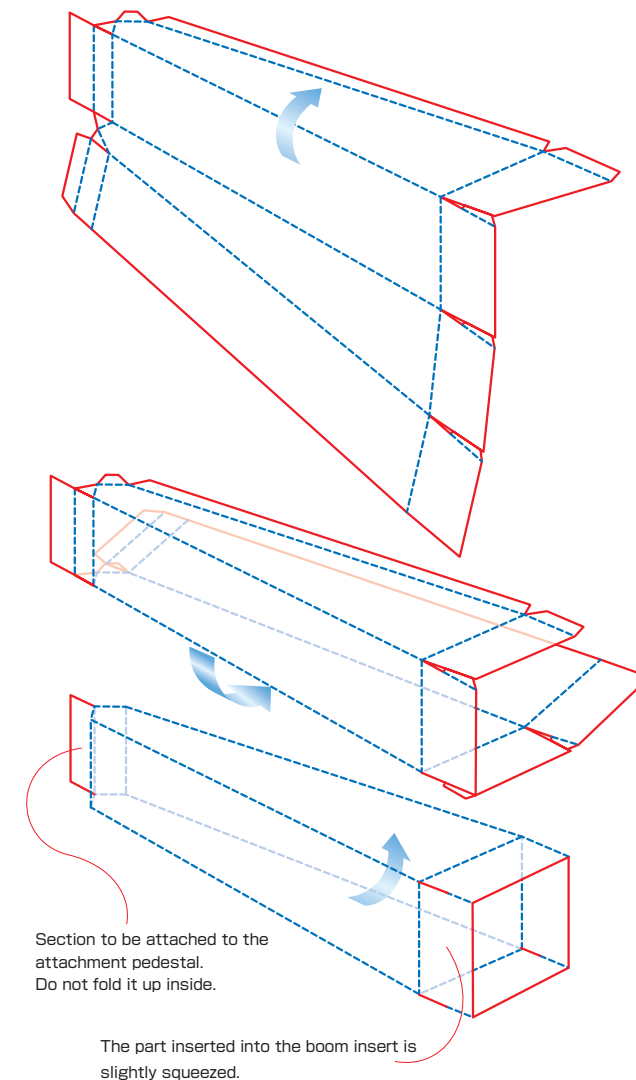
- ① The boom can be disassembled into the upper, middle, and lower parts.
- ② When you make a fold line, the cut-out line can be cut accurately.
- ③ Assemble after folding.

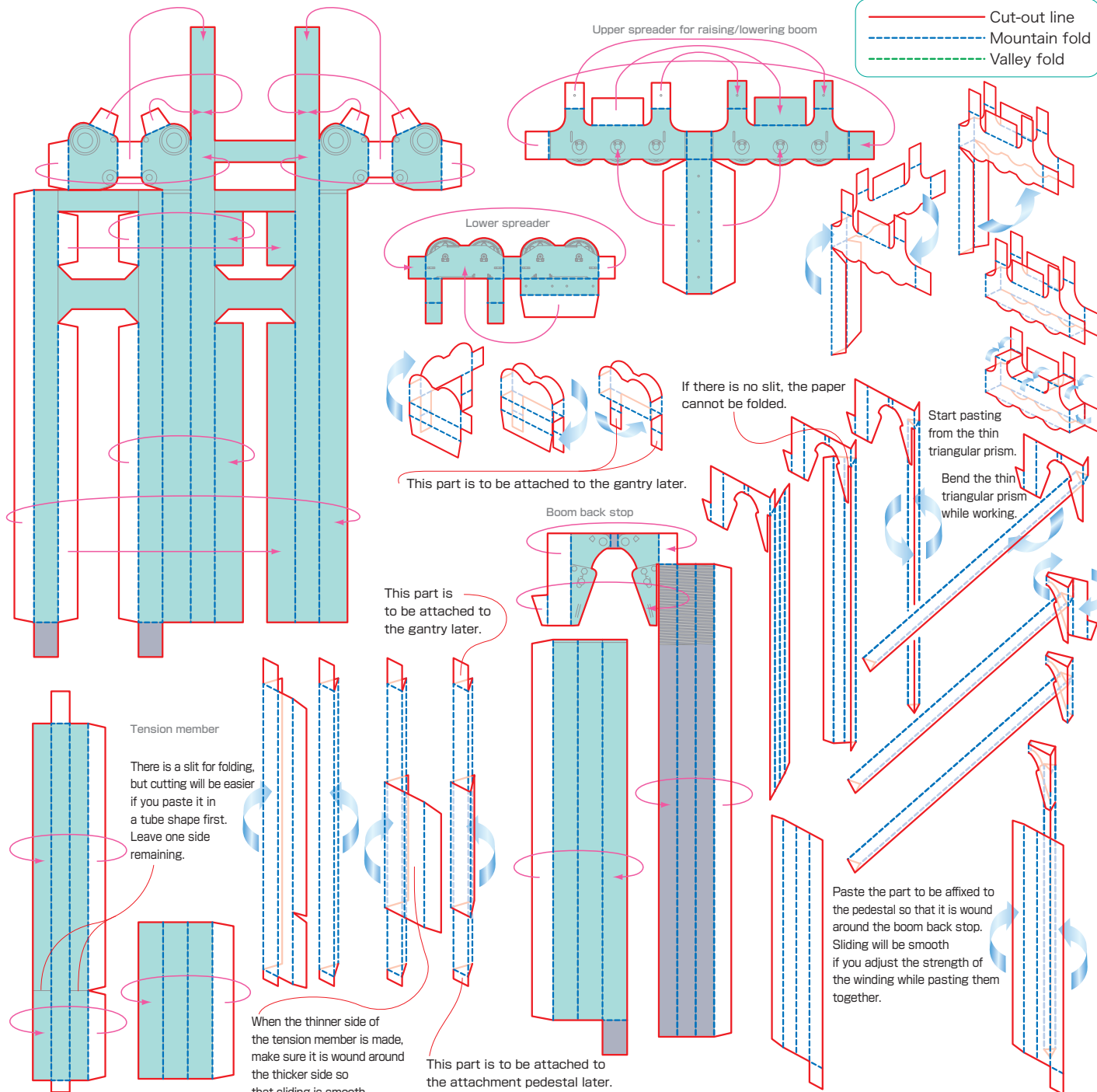




Assembly procedure

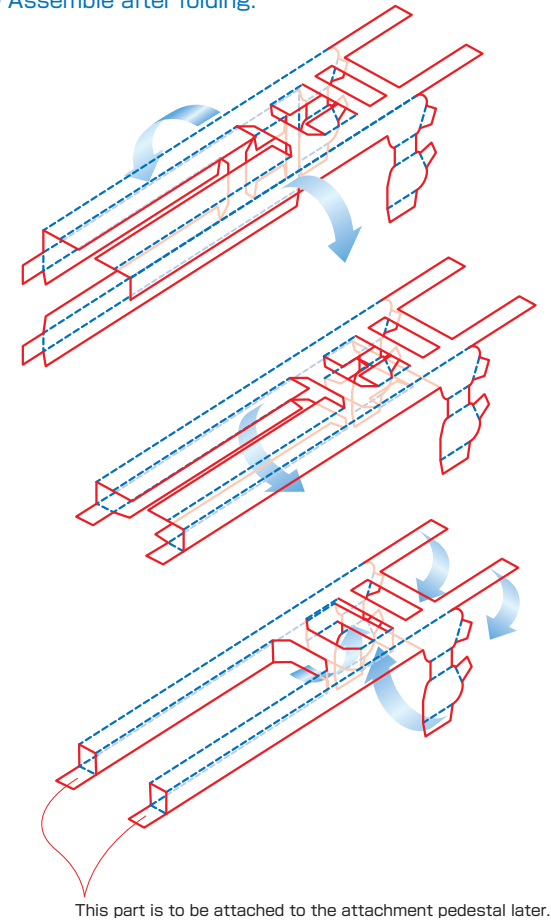
- ① In this section, we will make the boom insert and boom base.
- ② When you make a fold line, the cut-out line can be cut accurately.
- ③ Assemble after folding.



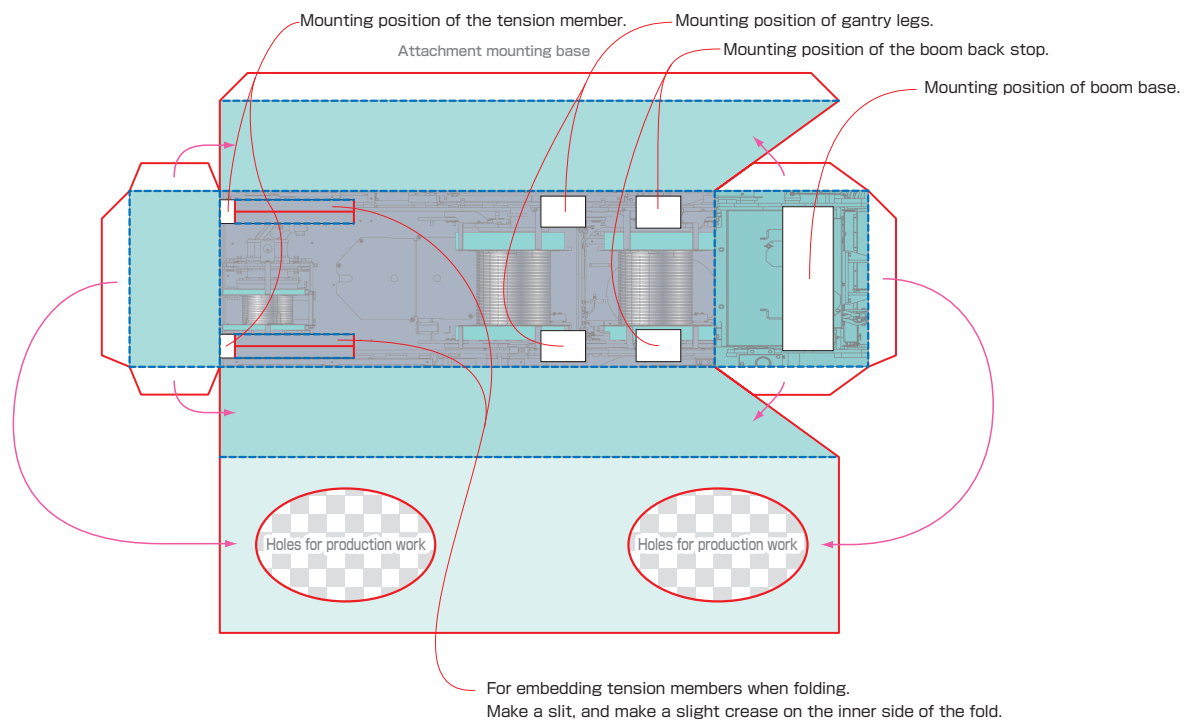
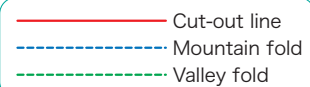


Assembly procedure

- ① Make a gantry, spreader, etc.
- ② When you make a fold line, the cut-out line can be cut accurately.
- ③ Assemble after folding.

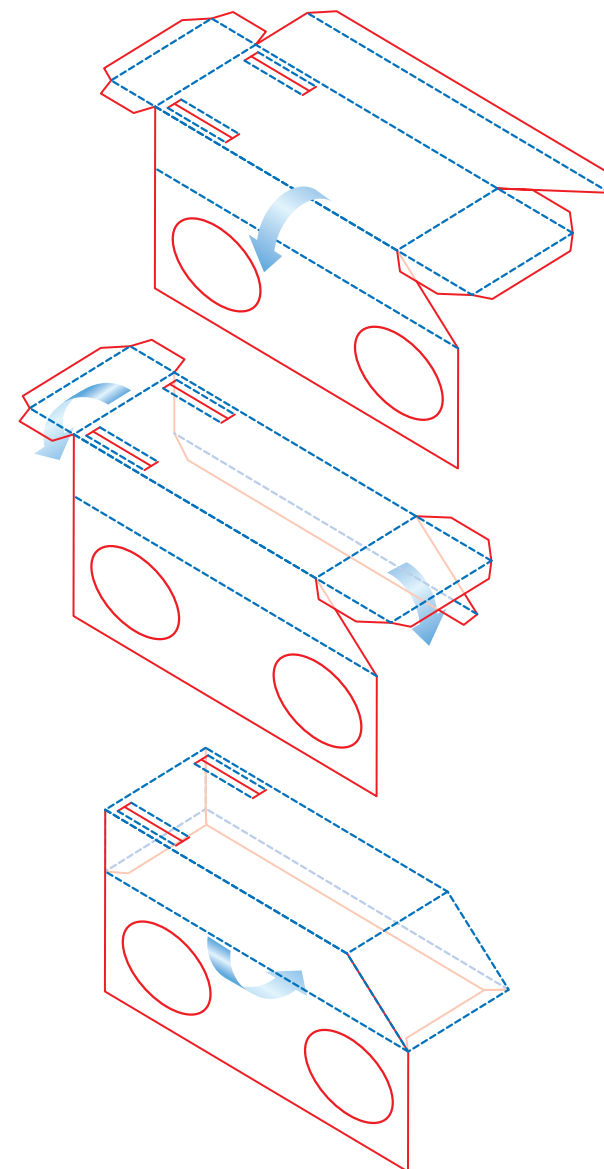


Attachment mounting base assembly diagram

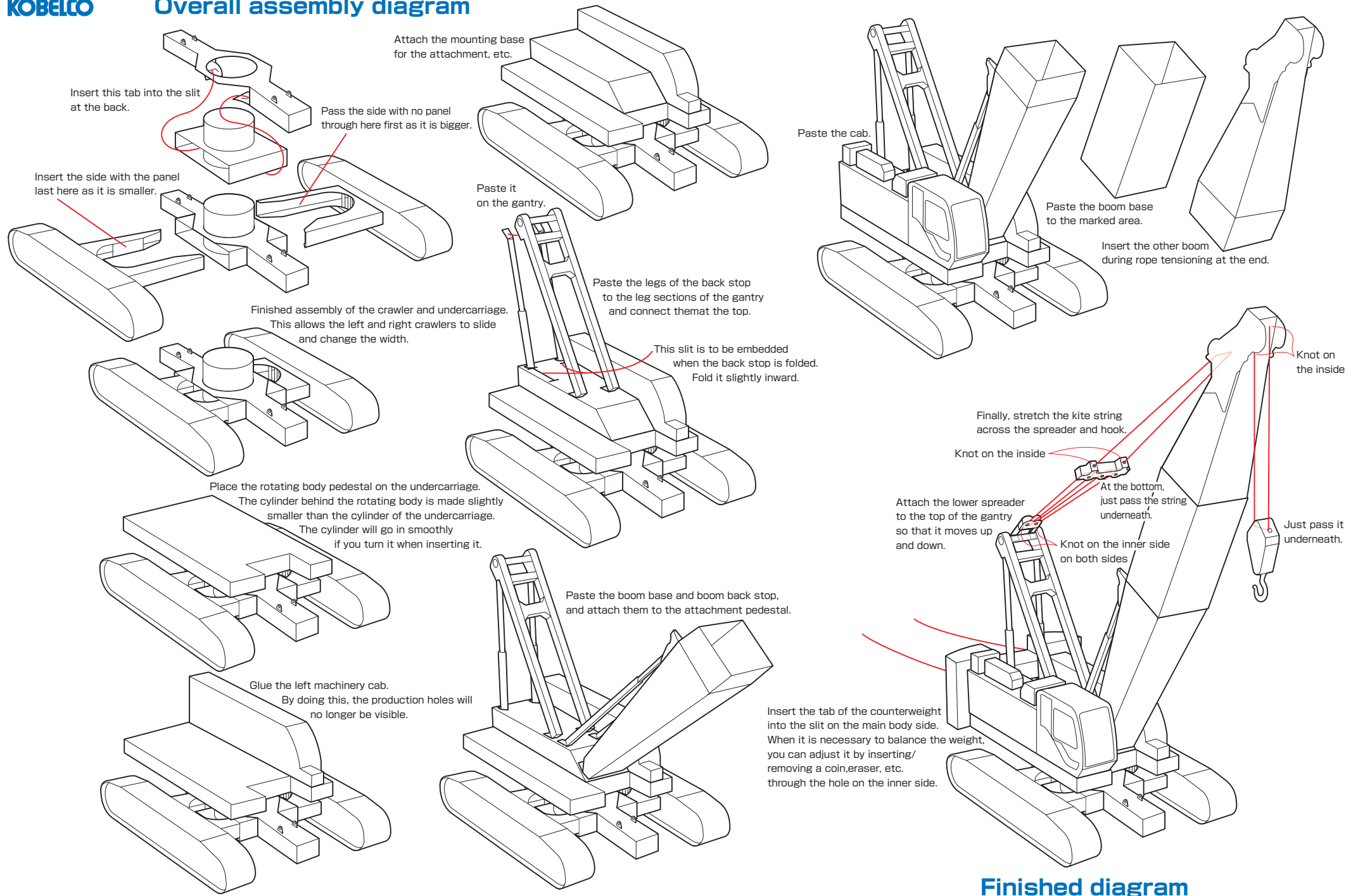


Assembly procedure

- ① In this section, we will make a pedestal for attaching the boom base, gantry, tension member, etc.
- ② If you make a fold line in the same way as the others, the cut-out line can be cut.
- ③ Assemble after folding.



Overall assembly diagram



Finished diagram